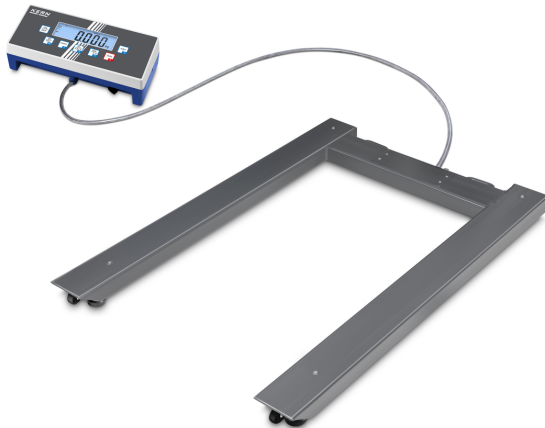


# KERN UID 3000K-0M

Pallet scale with and a wide range of interfaces, verification optional



## Category

Brand	KERN
Product category	Industrial scale
Product group	Pallet scale
Product family	UID

## Measuring System

Construction type of the scale	Single-range balance
Number of weighing ranges	1
Weighing system	Strain gauge
Weighing capacity [Max]	3000 kg
Readability [d]	1 kg
Resolution	3.000
Linearity	± 3 kg
Reproducibility	1 kg
Tare range	-3000 kg
Default unit	kg
Units	kg
	g
	lb
	oz
	PCS
	tj HJ
Units (if device is conformity assessed)	kg
Minimum weight [Min]	20 kg
Adjustment options	Adjusting with external weight
Recommended adjusting weight	3000 kg (M1)
Stabilization time	4 s
Warm-up time	10 min
Eccentric loading at 1/3 [Max]	5 kg

Loadcell type	KELI-SQB-1500kg
Load cell connection	4-wire

## Approval

CE mark	✓
Accuracy classe	III
Verification scale interval [e]	1 kg
Conformity assessment possible ex works	✓

## Display

Display type	LCD
Display type	LCD
Display screen size	110×35 mm
Display backlight	✓
Display digit height - smallest digit	25 mm
Display digit height	25 mm
Languages of the user interface	Symbol language

## Construction

Dimension display device (W×D×H)	268×115×80 mm
Dimensions weighing platform (W×D×H)	1195×840×110 mm
Material display housing	Plastics
Material weighing plate	steel, powder-coated
Material platform	steel, powder-coated
Dimensions weighing surface (W×D)	1195×840 mm
Cable length	5 m
Display device cable length	5 m
Allowed cable length display device [Max]	15 m
Material load cell(s)	alloyed steel
Load cells - number	4
Levelling feet adjustable	✓
Wall mount	✓
Stand inclinable	✓

## Functions

Number of keys for operation	4
Auto-off interval(s) in mains power mode	3 min
	off
	5 min
	30 min
Auto-off interval(s) in battery mode/rechargeable battery mode	15 min
	3 min
	off
	5 min

# KERN UID 3000K-0M



Pallet scale with and a wide range of interfaces, verification optional

	30 min 15 min
Time display	✓
Tare function	manual (single)
Hold function	✓
Percentage determination	✓
Counting function	✓
Tolerance weighing	✓
Tolerance weighing - type of signal	visual
Function for averaging under unstable weighing conditions	✓
Recipe/summing level	Sum A
Alibi memory	optional internal memory
Alibi memory - number of memory spaces	250.000
Interfaces	RS-232 standard Ethernet (optional, factory) USB (optional, factory) WiFi (optional, factory) Alibi memory (optional, factory) USB-Host/Master (optional, factory) Verification plug (optional, factory) Bluetooth BLE (v4.0) (optional, factory)
IP protection - display	IP65
IP protection - load cell	IP67

Counting	
Reference quantity	10, 20, 50, 100, 200

Power Supply	
Input voltage power supply / power [Max]	100 V - 240 V AC 50/60 Hz 0.4 A max
Input voltage device / power [Max]	12 V DC, 1000 mA
Plug-in power supply type	Power adapter
Supplied power supply	Power supply unit
Plug-in power supply / adapter for countries - included with the delivery	EURO UK US

Rechargeable battery optional	Rchrg. battery optional - intern
Rechargeable battery charging time	3 h
Rechargeable battery operating time - backlight on	26 h

Rechargeable battery operating time - backlight off	43 h
Battery	no battery
Battery / accumulator type	Pb

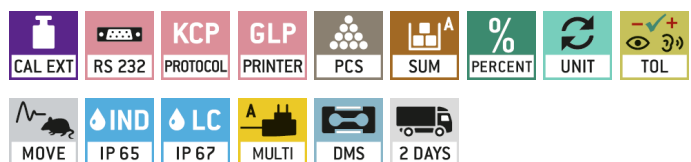
Environmental conditions	
Humidity of environment [Min]	10 %
Humidity of environment [Max]	95 %
Ambient temperature [Min]	-10 °C
Ambient temperature [Max]	40 °C

Packing & Shipping	
Readability force [d] (N)	2 d
Dimensions packaging (W×D×H)	1270×900×260 mm
Net weight	44 kg
Shipping method	Freight
Net weight approx.	44 kg
Gross weight approx.	65 kg
Shipping weight	65 kg

Services (optional)	
Article number for adjustment at the location of installation	961-252
Article number for conformity assessment	965-232
Article number for DAkkS calibration	963-132
Article number for certificate of conformity (verification)	969-517

## Pictograms

### STANDARD



### OPTION



### FACTORY

